

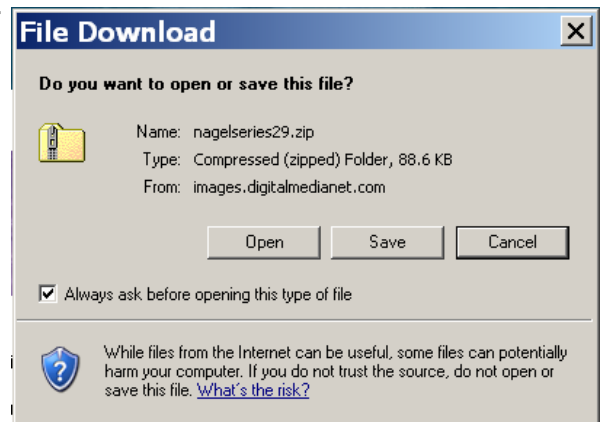
Joe's Corner

Presented by the Photo SIG of NNCUG

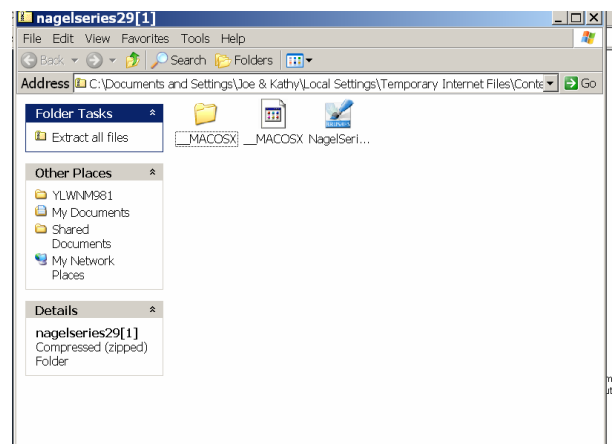
Tutorial: *Downloading new Brushes for your Photoshop program*

From time to time you may want to try a new technique or process that you have seen or heard about and you may need to download some new brushes into your program. As I showed you in our class, what I did to get the set of Cloud Brushes that I used was to go on the internet and google “Cloud Brushes”. This will give you a list of web sites that may have brushes available for downloading. Many of these sites are free, but many will charge a fee or ask for donations. The brushes will normally be downloaded as .zip files. This means that the file has been compressed and needs to be de-compressed before you can use it in your program. Following are the steps necessary to load the brushes into the program.

1) When you click on the download link, the following pop up will be displayed asking what you want to do with the compressed file once it is downloaded. By clicking on the Open button, the download will start, this will begin the sequence of de-compressing and loading the brushes into the proper folder.



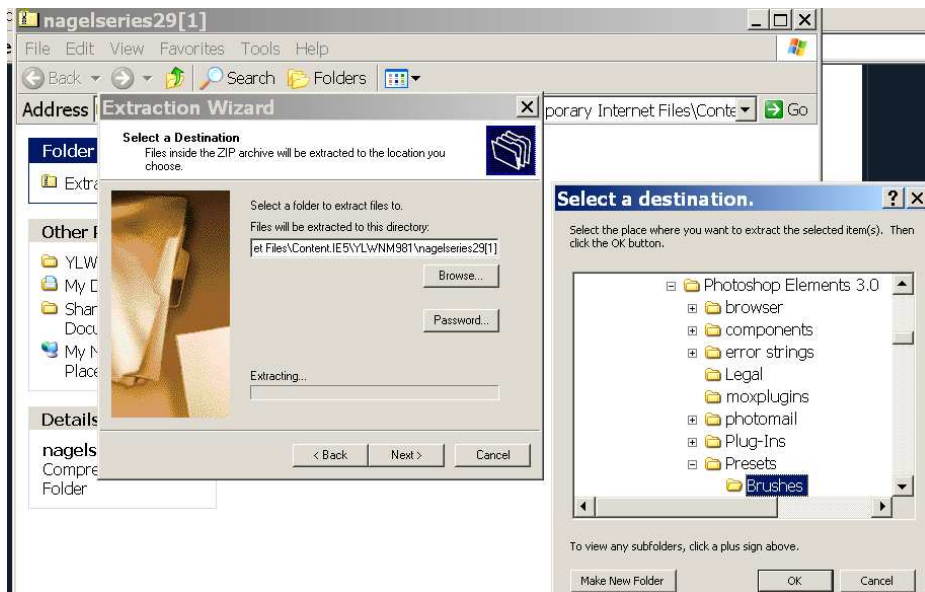
2) After the files have been downloaded onto your computer, this next screen will be displayed asking to Extract the files. By clicking on the words “Extract all files” in the Folder Tasks box, the Extraction Wizard will start and will lead you through the final steps.



3) The first thing the wizard wants to know is where you want the extracted files to be placed. By clicking on the Browse button you will be given a second screen that will let you select the folder in Adobe Photoshop where they will be stored.

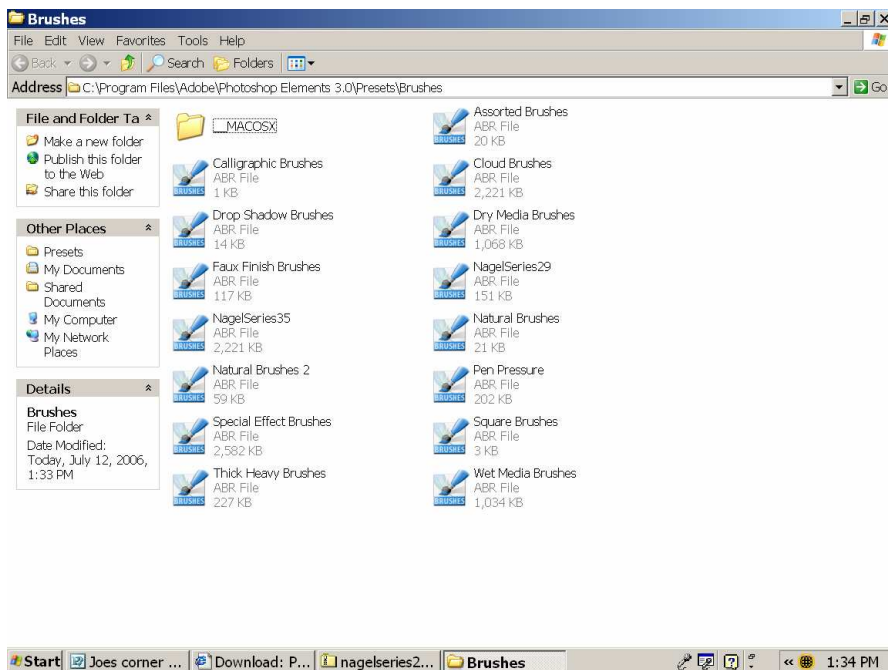
The hierarchy of folders will look something like this:

- My Computer:
- Local Disk (C):
- Program Files:
- Adobe:
- Photoshop Elements 3 (or 4):
- Presets:
- Brushes



After you click and highlight the Brushes folder click on the OK button and then on the Next button on the Extraction Wizard screen.

4) When the wizard is finished you will be presented with this final screen showing the contents of the Brushes folder and, if everything went right, your brushes will be one of those files listed.



5) Now open up Photoshop and start painting!

Link to cloud brushes I used in class:

<http://www.digitalmediadesigner.com/articles/viewarticle.jsp?id=36358>